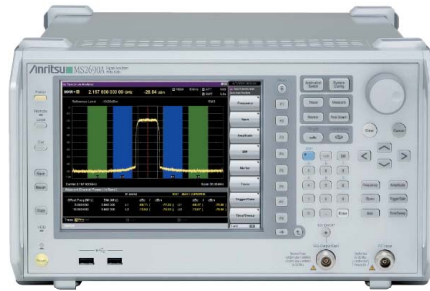


Device Test Proposal

MS269xA
Signal Analyzer

MS269xA Signal Analyzer MS269xA-020 Vector Signal Generator (Option)

Device Test Proposal



Anritsu Corporation

Discover What's Possible™
MS269xA-E-F-2

Slide 1

Anritsu

MS269xA Signal Analyzer

The MS269xA Signal Analyzer supports multiple functions, such as signal analyzer, vector signal generator, and BER test set.

The following key features help evaluations, especially of amplifier, filter, repeater.

- ★ **All-in-One Unit Support for Modulation Signal Output and Spectrum Analysis**
Tx and Rx testing using all-in-one unit with built-in MS269xA-020 Vector Signal Generator
- ★ **Excellent Dynamic Range and ACLR Performance**
Dramatically improved spectrum analyzer dynamic range and vector signal generator ACLR function
- ★ **Excellent Total Level Accuracy**
± 0.5 dB in 50 Hz to 6 GHz range
- ★ **CCDF Function**
Supports CCDF analysis
- ★ **Wide Range of Waveform Patterns**
Vector signal generator option supporting various modulation signals
- ★ **Multi-Carrier Signal Generation and Output (MX269004A Multi-Carrier IQproducer)**
Multiple carrier waveform patterns generated at PC and output from vector signal generator

Discover What's Possible™
MS269xA-E-F-2

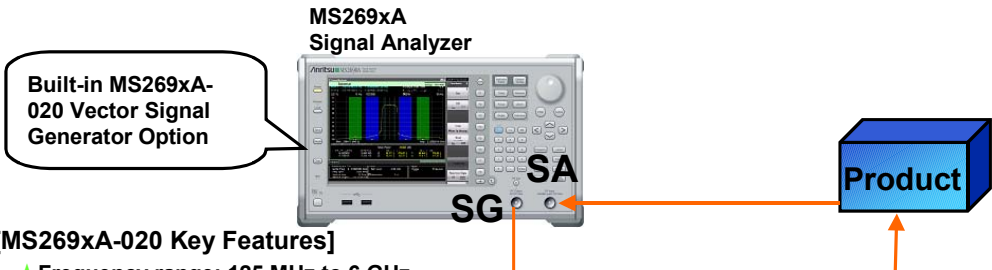
Slide 2

Anritsu

Built-in Vector Signal Generator (Option)

The MS269xA Signal Analyzer with built-in vector signal generator option (MS2690A-020) supports both **signal output** and **spectrum analysis**.

The all-in-one signal generator (SG) and spectrum analyzer (SA) set simplifies the system and cuts costs.



[MS269xA-020 Key Features]

- ★ Frequency range: 125 MHz to 6 GHz
- ★ Vector modulation bandwidth: 120 MHz
- ★ Absolute level accuracy: ± 0.5 dB
- ★ Linearity: ± 0.2 dB typical
- ★ Built-in BER measurement function
- ★ AWGN adding function

Cost Reduction: 20%
(Compared with separate SG and SA)

Excellent Dynamic Range and ACLR Performance

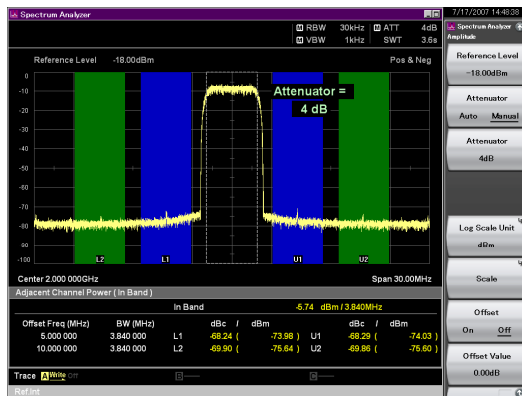
High-Performance Spectrum Analyzer

- ◆ Average noise level: -155 dBm/Hz (at 2 GHz)
- ◆ TOI: $+22$ dBm
- ◆ ACLR: -76 dBc (Theoretical value, W-CDMA, 5 MHz)

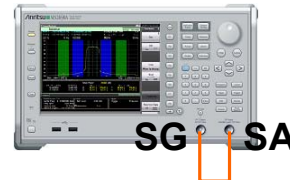
High-Performance Vector Signal Generator

- ◆ ACLR Performance (catalog value)
 - ≤ -64 dBc @ 5 MHz offset
 - ≤ -67 dBc @ 10 MHz offset
- ◆ Absolute level accuracy: ± 0.5 dB
- ◆ Linearity: ± 0.2 dB typical

Screen: ACLR Performance (Actual data) (W-CDMA, TestModel1 64DPCH, 2 GHz, SG Output -5 dBm)



[Measuring System]



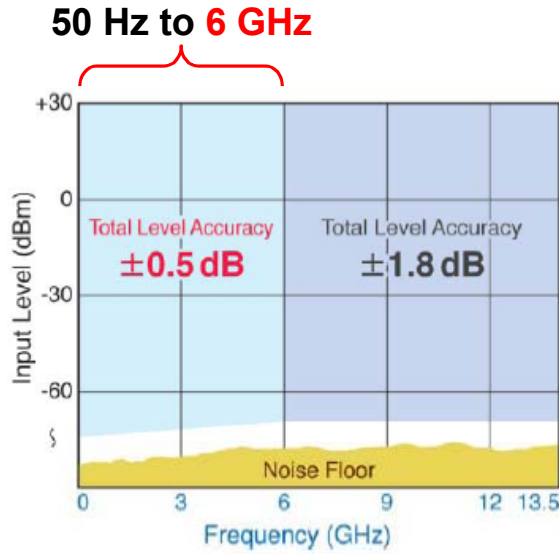
5 MHz -68.2 dBc*
10 MHz -69.8 dBc*

*The data is a measurement example with randomly selected value. We do not guarantee the measurement result.

Excellent Level Accuracy

The MS269xA realizes a total level accuracy of ± 0.5 dB in the range from 50 Hz to 6 GHz by adopting 6GHz basic frequency band and unique built-in level calibration oscillator.

Yield is improved by the reduced measurement error.



[Note]
 -Eliminates effect of noise floor
 -Used only when Uncal does not occur

CCDF Function

CCDF analysis can be performed for 29.761 MHz max. bandwidth signals. For example, the power amplifier of a W-CDMA BS can be evaluated with four carriers (total 20 MHz bandwidth).

[Operation]
 Application Switch
 > F2: Signal Analyzer
 > F5: Trace
 > F1: Trace Mode
 > F4: CCDF

Screen: CCDF Analysis (W-CDMA, TestModel1 64DPCH, 2 GHz)

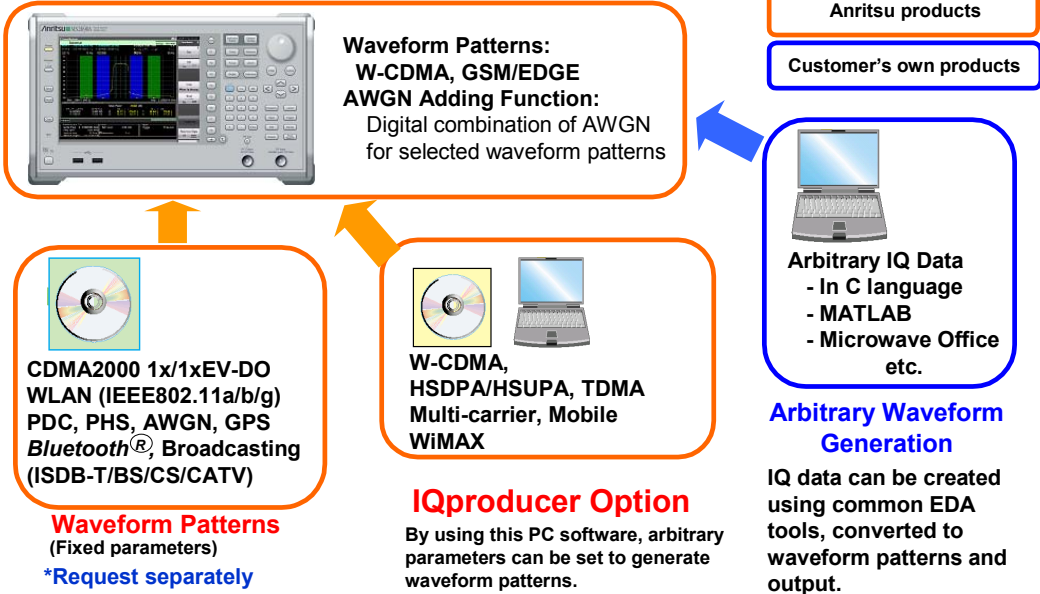


Screen: CCDF Analysis (W-CDMA, TestModel1 64DPCH x 4 Carrier, 2 GHz)



Wide Range of Waveform Patterns

Standard Waveform Patterns, AWGN Adding Function



Discover What's Possible™
MS269xA-E-F-2

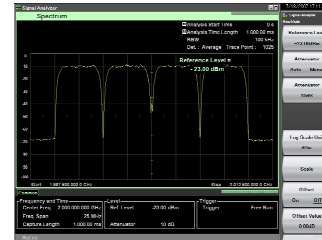
Slide 7

Anritsu

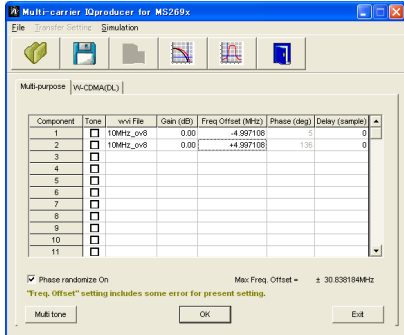
Multi-Carrier IQproducer

The MX269904A can generate multi-carrier waveform patterns for modulation signals and tone signals for various communications systems. The Multi-purpose function and W-CDMA (DL) function support easy evaluation using multi-carrier signals.

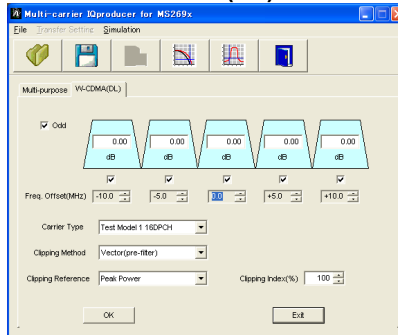
Screen: W-CDMA 4-carrier output



Screen: Multi-purpose function



Screen: W-CDMA (DL) function



Discover What's Possible™
MS269xA-E-F-2

Slide 8

Anritsu

Anritsu Corporation

5-1-1 Onna, Atsugi-shi, Kanagawa, 243-8555 Japan
Phone: +81-46-223-1111
Fax: +81-46-296-1264

• U.S.A.

Anritsu Company

1155 East Collins Blvd., Richardson, TX 75081, U.S.A.
Toll Free: 1-800-ANRITSU (267-4878)
Phone: +1-972-644-1777
Fax: +1-972-671-1877

• Canada

Anritsu Electronics Ltd.

700 Silver Seven Road, Suite 120, Kanata,
Ontario K2V 1C3, Canada
Phone: +1-613-591-2003
Fax: +1-613-591-1006

• Brazil

Anritsu Eletrônica Ltda.

Praca Amadeu Amaral, 27 - 1 Andar
01327-010-Paraiso-São Paulo-Brazil
Phone: +55-11-3283-2511
Fax: +55-11-3288-6940

• U.K.

Anritsu EMEA Ltd.

200 Capability Green, Luton, Bedfordshire LU1 3LU, U.K.
Phone: +44-1582-433280
Fax: +44-1582-731303

• Germany

Anritsu GmbH

Nemetschek Haus, Konrad-Zuse-Platz 1
81829 München, Germany
Phone: +49 89 442308-0
Fax: +49 89 442308-55

• France

Anritsu S.A.

9, Avenue du Québec, Z.A. de Courtabœuf, 91951 Les
Ulis Cedex, France
Phone: +33-1-60-92-15-50
Fax: +33-1-64-46-10-65

• Italy

Anritsu S.p.A.

Via Elio Vittorini, 129, 00144 Roma, Italy
Phone: +39-6-509-9711
Fax: +39-6-502-2425

• Sweden

Anritsu AB

Borgarfjordsgatan 13, 164 40 KISTA, Sweden
Phone: +46-853470700
Fax: +46-853470730

• Finland

Anritsu AB

Teknobulevardi 3-5, FI-01530 Vantaa, Finland
Phone: +358-20-741-8100
Fax: +358-20-741-8111

• Denmark

Anritsu A/S

Kirkebjerg Allé 90, DK-2605 Brøndby, Denmark
Phone: +45-72112200
Fax: +45-72112210

• Singapore

Anritsu Pte Ltd.

10, Hoe Chiang Road, #07-01/02, Keppel Towers,
Singapore 089315
Phone: +65-62828-2400
Fax: +65-6282-2533

• P.R. China (Hong Kong)

Anritsu Company Ltd.

Suite 923, 9/F., Chinachem Golden Plaza, 77 Mody
Road, Tsimshatsui East, Kowloon, Hong Kong, P.R. China
Phone: +852-2301-4980
Fax: +852-2301-3545

• P.R. China (Beijing)

Anritsu Company Ltd. Beijing Representative Office

Room 1515, Beijing Fortune Building,
No. 5, Dong-San-Huan Bei Road,
Chao-Yang District, Beijing 10004, P.R. China
Phone: +86-10-6590-9230
Fax: +86-10-6590-9235

• Korea

Anritsu Corporation, Ltd.

8/F Hyunjuk Building, 832-41, Yeoksam dong,
Kangnam-ku, Seoul, 135-080, Korea
Phone: +82-2-553-6603
Fax: +82-2-553-6604

• Australia

Anritsu Pty Ltd.

Unit 21/270 Ferntree Gully Road, Notting Hill,
Victoria 3168, Australia
Phone: +61-3-9558-8177
Fax: +61-3-9558-8255

• Taiwan

Anritsu Company Inc.

7F, No. 316, Sec. 1, Neihu Rd., Taipei 114, Taiwan
Phone: +886-2-8751-1816
Fax: +886-2-8751-1817

• India

Anritsu Corporation India Liaison Office

Unit No. S-3, Second Floor, Esteem Red Cross Bhavan,
No. 26, Race Course Road, Bangalore 560 001, India
Phone: +91-80-30944707
Fax: +91-80-22356648

Please Contact: